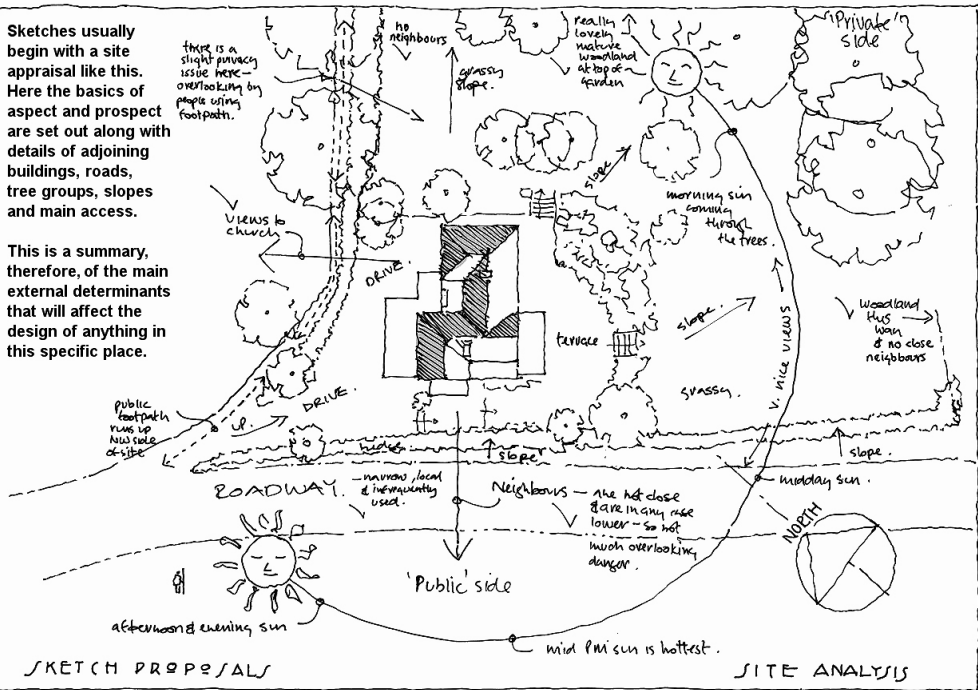


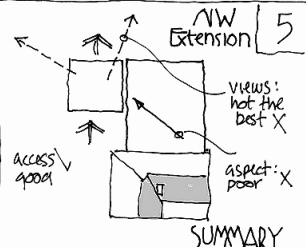
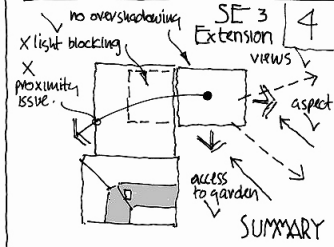
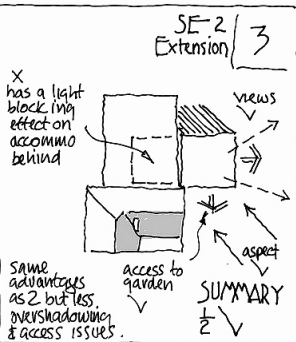
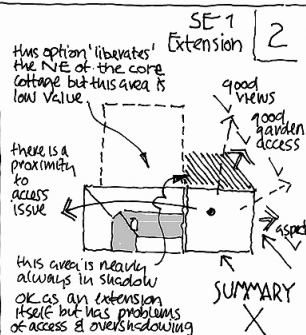
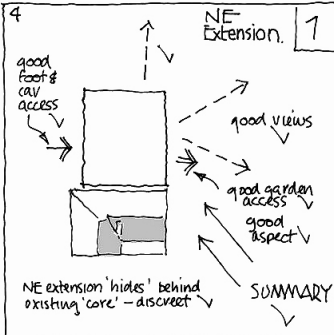
Sketches usually begin with a site appraisal like this. Here the basics of aspect and prospect are set out along with details of adjoining buildings, roads, tree groups, slopes, and main access.

This is a summary, therefore, of the main external determinants that will affect the design of anything in this specific place.



SKETCH PROPOSAL

SITE ANALYSIS



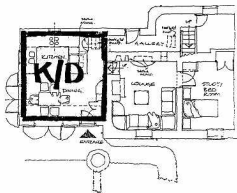
Notes:

- Type 1 is most advantageous extension. This is the baseline extension option.

MAIN EXTENSION STRATEGIES 3



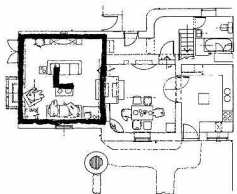
On this sketch various extension strategies are examined for a domestic extension. Sketches proceed from generalities to particulars. This sketch is still very conceptual in feel.



**- TO PLACE THE KITCHEN + DINING AREAS IN THE EXTENSION.**

**BASIC CHARACTERISTICS :-**

- + OFFERS GOOD VIEWS, LIGHT + ACCESS TO GARDEN FOR KITCHEN / DINING AREAS, IF THESE ARE THE MOST FREQUENTLY USED SPACES.
- + BY COMBINING KITCHEN AND DINING FUNCTIONS + PLACING THEM IN THE EXTENSION AN ADDITIONAL ROOM IS CREATED - THE STUDY / BEDROOM.
- THE STUDY BEDROOM IS ONLY ACCESSIBLE THROUGH THE LOUNGE.
- THE ENTRANCE IS RELOCATED TO ENTER THE KITCHEN DINING SPACE + ACCESS TO IT IS A LITTLE CONSTRICTED BY THE WELL.
- THIS OPTION COULD BE MORE EXTENSIVE THAN OPTION 2, DUE TO THE RELOCATION OF THE KITCHEN, WITH ITS NECESSARILY RELOCATED SERVICES + DRAINAGE. HOWEVER, EITHER OPTION WITH 1ST FLOOR EXQUISITE PLAN OPTION HAS SECURE SURCHARGE.
- + THIS OPTION WILL WORK WITH EITHER SINGLE OR 2 STOREY PLAN OPTIONS (SEE SECTION OPTIONS SUMMARY + PLANS).
- LOUNGE IS STILL SAME SIZE + RELATIVELY DARK, THOUGH OPTION FOR NEW PORCH TO EXTENSION COULD GIVE MORE LIGHT.
- LENGTHENED ACCESS IF KITCHEN AREA IS TO BE SEPARATED WITHIN EXTENSION.
- + NUMEROUS WINDOW / DOOR + ROOF OPTIONS. SEE ELEVATIONS!



**- TO PLACE THE LOUNGE IN THE EXTENSION.**

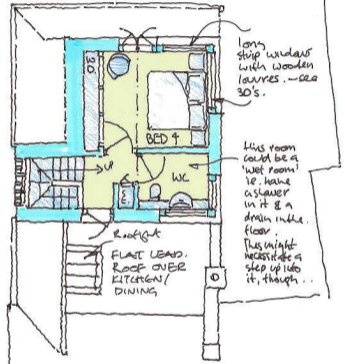
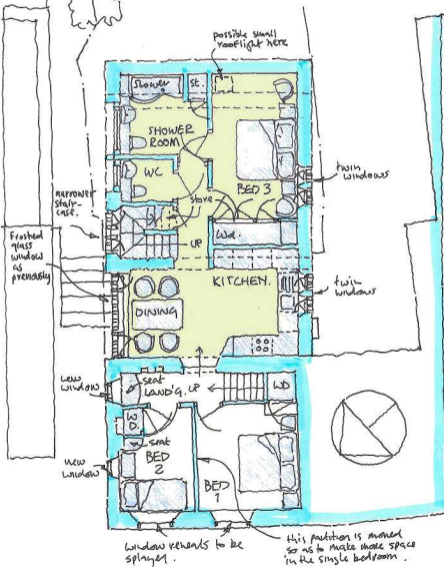
**BASIC CHARACTERISTICS :-**

- + OFFERS GOOD VIEWS, LIGHT + ACCESS TO GARDEN FOR LOUNGE, IF THIS IS THE MOST USED SPACE.
- LOSS OF STUDY BEDROOM (IN OPTION 1), BUT DINING AREA IS PLACED IN RELATIVELY DARK AREA OF FORMER LOUNGE + HAS GOOD POSITION + SPACE.
- + POSSIBILITY OF OPENING + 'WINDOW' OPENINGS TO LOUNGE TO GIVE MORE LIGHT + OPEN CHARACTER.
- + REROUTE OF KITCHEN SERVICES OBVIATED - KITCHEN STAYS IN-SITU.
- + NEW LOUNGE IS LARGE + WELL LT.
- + WORKS WITH SINGLE OR DOUBLE STOREY PLAN OPTIONS, WITH MINOR AMENDMENTS.
- + NUMEROUS WINDOW / DOOR + ROOF OPTIONS.
- + SHORT ACCESS ROUTES RELATIVE TO OPTION 1.

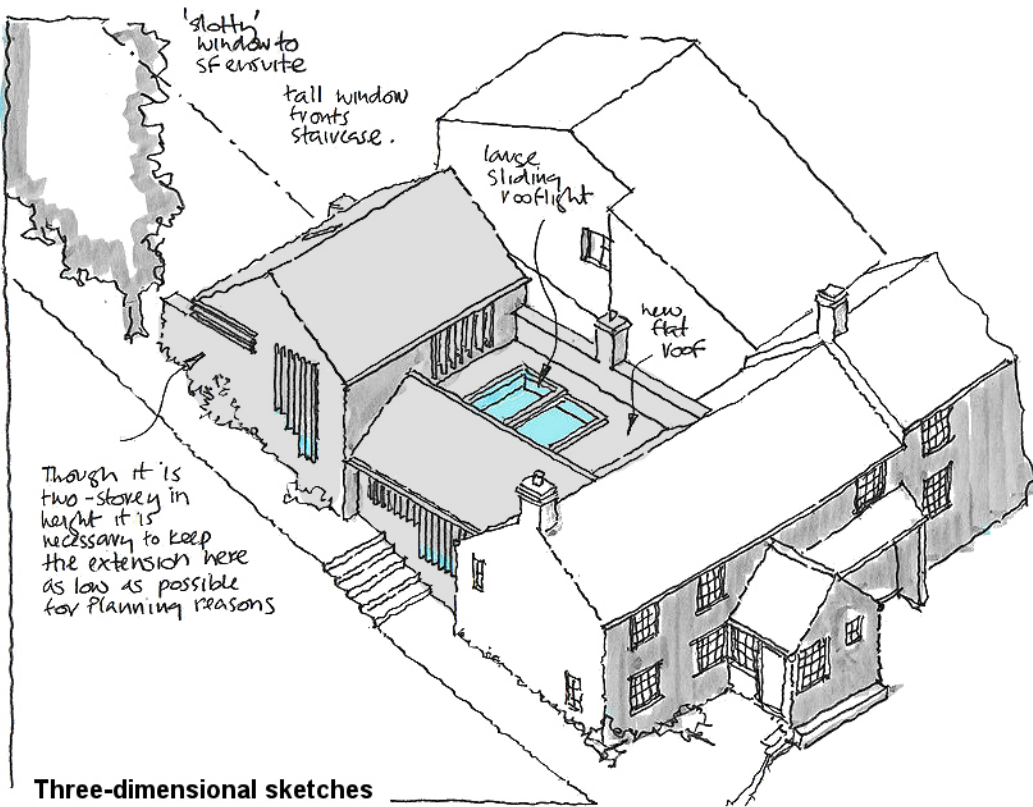
This sketch examines two very different accommodation options for a domestic extension. The plusses and minuses of each option (in the eyes of the architect) are summarised in the boxes on the right hand side. Each option is shown in more detail on other sketches.

# FIRST FLOOR PLAN = PT. 7

# SECOND FLOOR PLAN = PT. 7

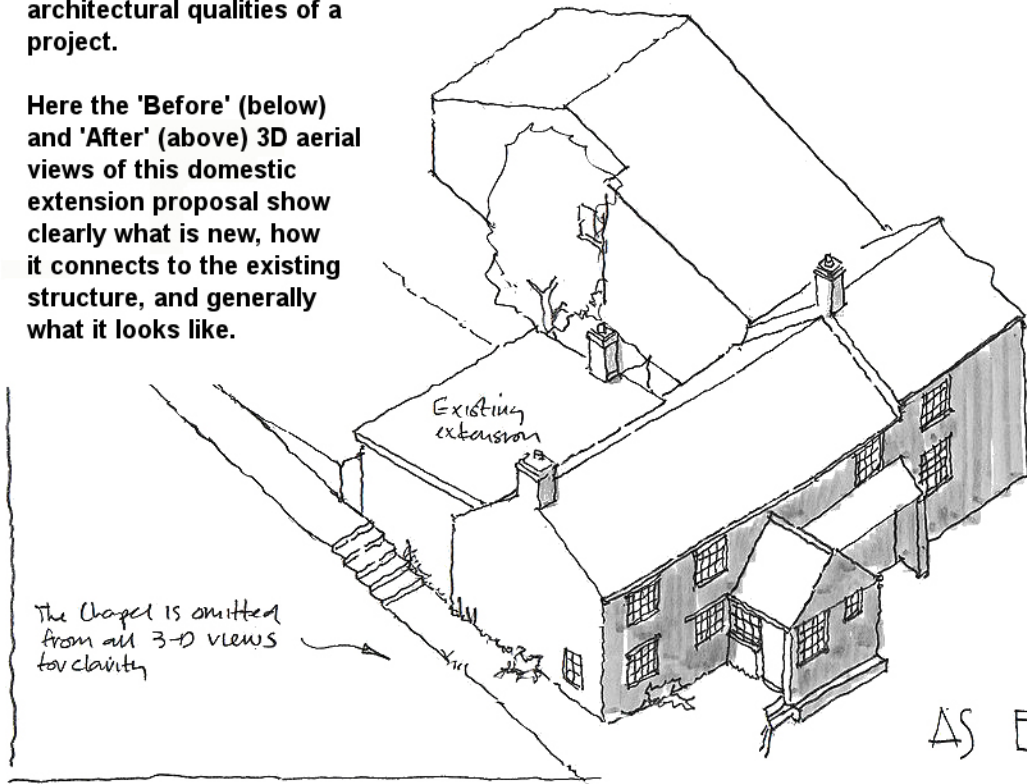


Sketch plans form the core of a sketch proposal package normally. Here one of seven plan options is shown for a domestic extension.



Three-dimensional sketches are essential to convey the architectural qualities of a project.

Here the 'Before' (below) and 'After' (above) 3D aerial views of this domestic extension proposal show clearly what is new, how it connects to the existing structure, and generally what it looks like.





**The most realistic form of 3D sketch is a SketchUP model like this. This model of an extension to a cottage has realistic material textures and colours and accurate shadows which can be shown for any time of day or any day week or month of the year. This model gives a good impression of what this structure may look like.**